
PREPARING TO PRINT FROM AN APPLICATION

Once the RIP is installed, you can make it available to print directly from applications on your computer. The following steps should be implemented first.

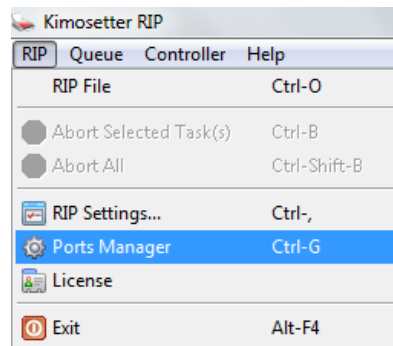
A) CREATE YOUR QUEUES.

In the “Queues” section – Page 32 of RIP manual - we describe how to create queues with desired RIP settings.

B) CREATE YOUR PORTS

Using the **Ports manager** you can define the ports representing the RIP’s queues to create virtual printers on your machine.

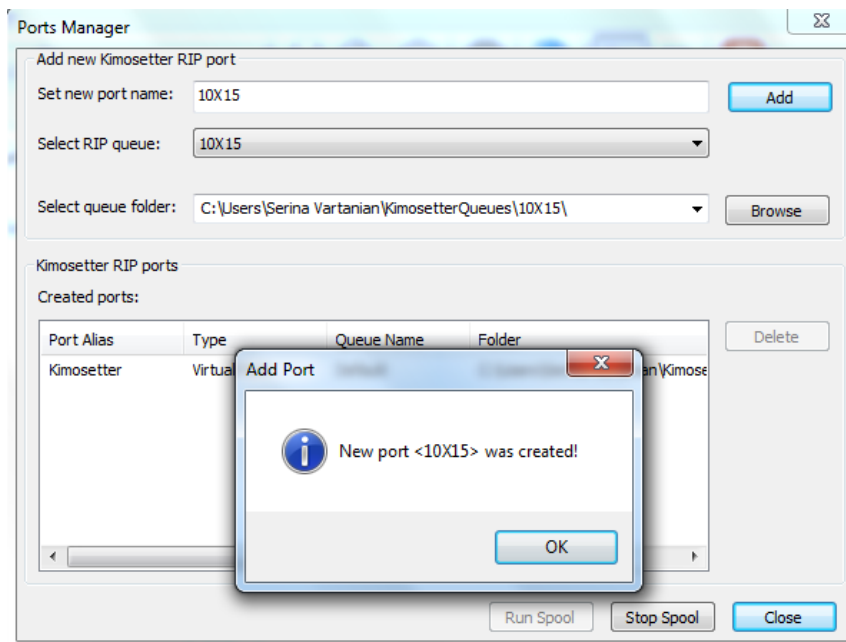
Open the dialog below using the menu **/RIP/Ports Manager**:



Opening Ports Manager

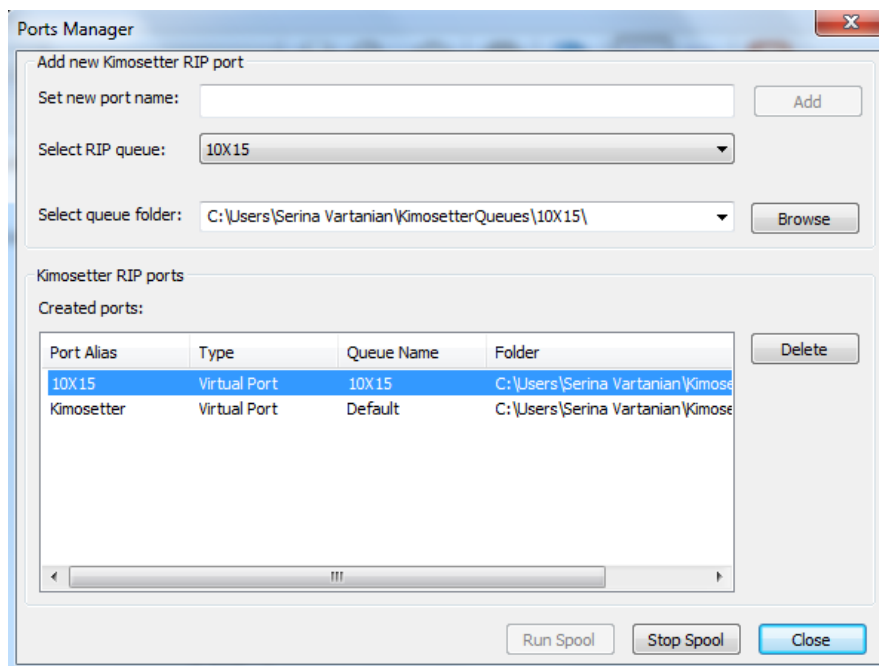
In the following dialog you can type in the name you have selected for the printer and choose the printer queue defined in the **Queues manager**. You can also change the queue folder if you do not like the default location. The folder will be used for temporary PostScript files created during printing to the RIP from an application.

Note: Port name must be one word (No spaces)



Defining the RIP port

Click the **Add** button to create and add the port. The RIP will tell you that a new port has been created. Press **OK** and return to the RIP window.



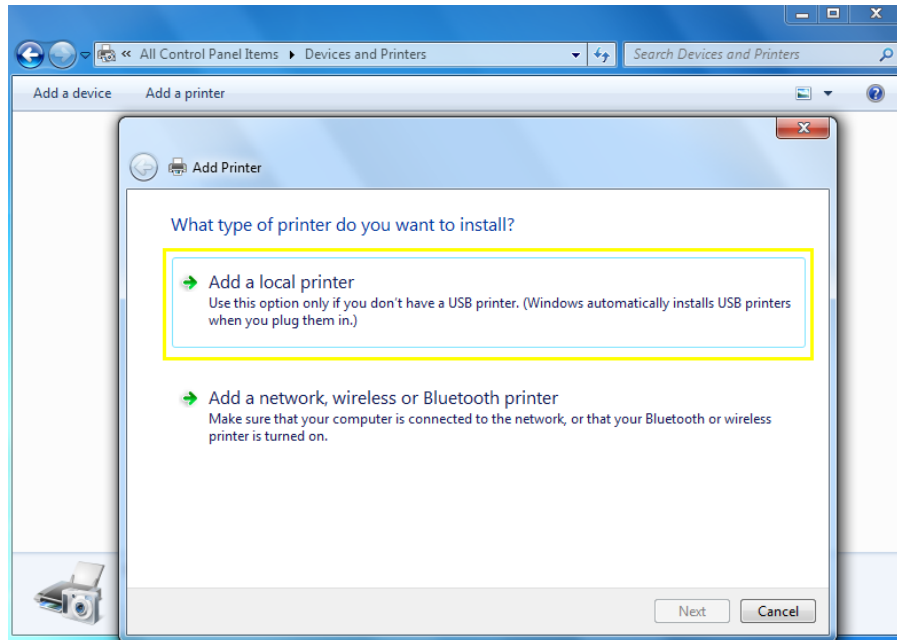
Created RIP port

Created ports are listed in the table. If you don't need a port, select it and hit **Delete**.

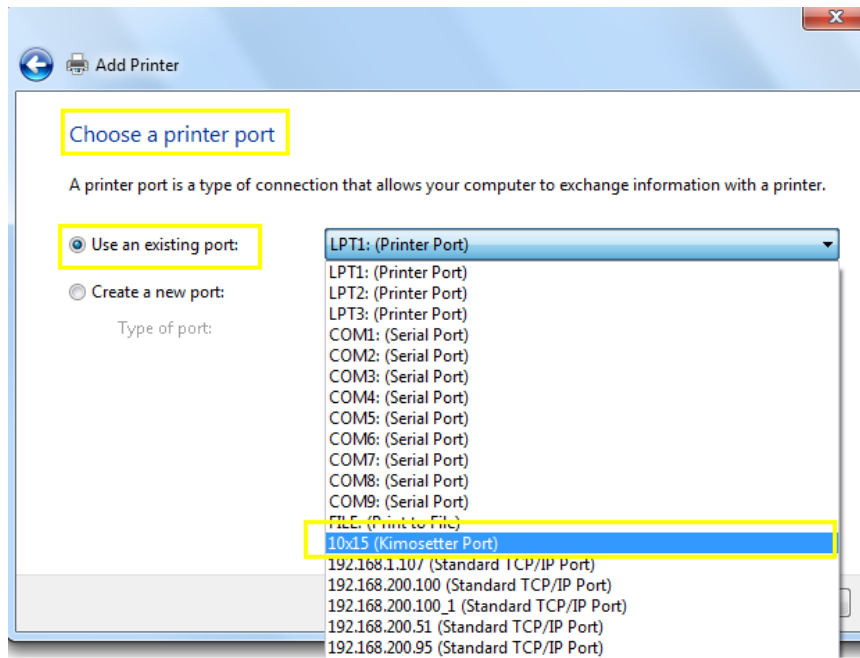
INSTALLING THE PRINTER WITH HP DRIVER

Click on */Start/Control Panel/Devices and Printers/Add a printer*

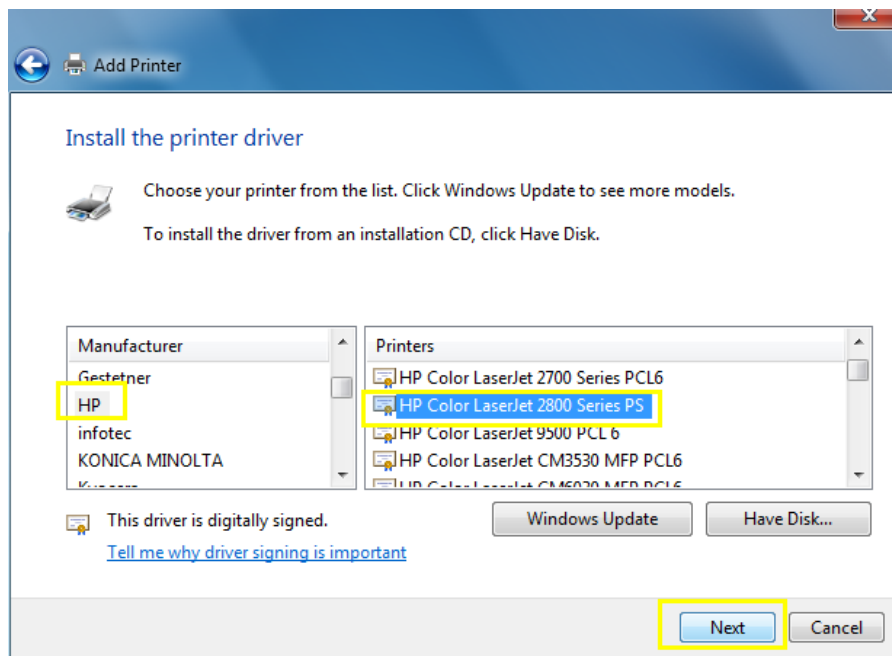
Follow the options in the screenshots below to install the printer with an HP driver.



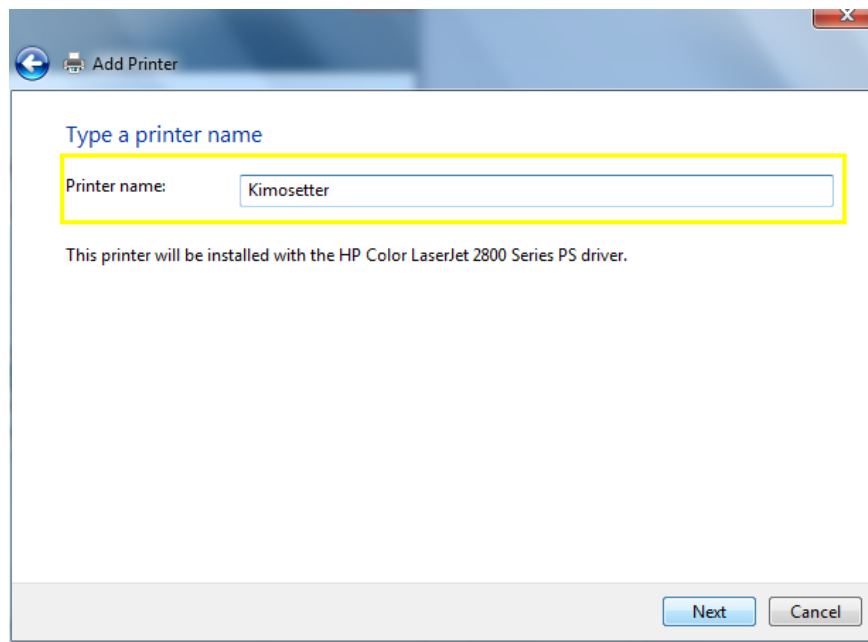
Add Printer Window



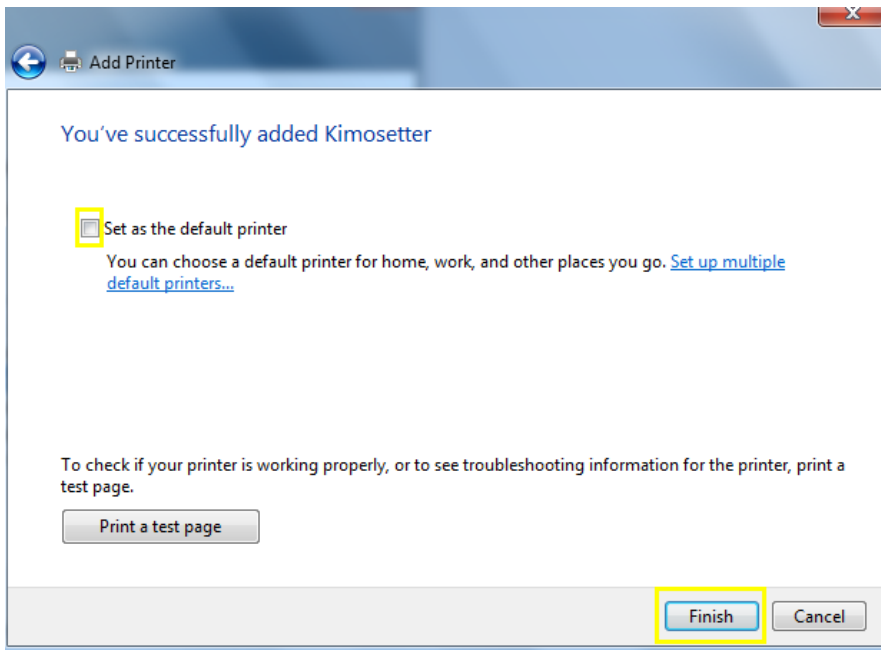
Select the Kimosetter Port



Select an HP PS Driver



Name the printer



Finish installation