

## ***About This Manual***

This manual is an introduction to the Kimosetter 340 RIP, a PC software RIP for Windows for use with the plate setter, Kimosetter 340, and the film setter, Kimosetter 340i. This manual will explain the set-up and start-up procedures for use with the RIP and Kimosetter. Please use this manual as a reference to learn about the many other available functions of the Kimosetter.

---

### ***How to use this operation manual***

---

#### ***Symbols***



The caution symbol gives you alerts and restrictions for using the RIP correctly. Please read carefully to avoid improper operation.



The memo symbol gives you useful information to refer to when using RIP and reading is recommended.

---

#### ***Trademarks***

Adobe, PostScript, PostScript 3, and PostScript logos are trademarks or registered trademarks of Adobe Systems Incorporated.

Windows is trademarks or registered trademarks of Microsoft Corporation in the United States and other countries.

Other brand names and product names are trademarks or registered trademarks of their respective companies.

---

#### ***Software copyright***

© 2002 Scanvec Amiable, Inc. All Rights Reserved.

© 2002 Adobe Systems Incorporated. All rights reserved.

© 2002 ALPS ELECTRIC CO., LTD.

---

#### ***Regarding this manual***

1. Reproduction of any part of this operation manual without prior permission is prohibited.
2. The contents of this operation manual are subject to change without notice.
3. Great care was taken in making this manual. However, if you find any inconsistencies, errors or omissions in this manual, please don't hesitate to contact your supplier.
4. Regarding the content of this manual, please understand that we will not accept any liability whatsoever for any resulting operational damage as well as direct, indirect, exceptional, and accidental operational damage regardless of Clause 3.

*Manual copyright*

---

© 2002 Svanvec Amiable, Inc. All Rights Reserved.

© 2002 ALPS ELECTRIC CO., LTD.

# Contents

About This Manual .....	1
How to use this operation manual .....	1
Chapter 1. Set Up.....	5
System Requirements .....	5
To connect the Kimosetter 340/340i to your computer .....	5
Attach hardware key .....	5
To install program .....	6
For Windows 98/Me .....	6
For Windows 2000/XP .....	13
Before using the Kimosetter .....	17
For Windows 98/Me .....	17
For Windows 2000/XP .....	18
To uninstall RIP .....	19
For Windows 98/Me .....	19
For Windows 2000/XP .....	20
Chapter 2. Functions of the RIP.....	21
Print Monitor .....	21
Function of each button .....	21
Information display .....	22
Menu .....	22
Setup Properties .....	24
General tab .....	24
Print tab .....	25
Color Adjust tab .....	26
Driver Options.....	26
Offset Adjustment .....	26
Ribbon Information .....	27
Negative Print .....	27
Density Curve Adjustment .....	27
Function of each button .....	28
Create and Edit Density curve .....	28
Preferences.....	30
Chapter 3. Printing.....	31
Printing Files without opening the associated application software. ....	31
Printing from the application software. ....	32
Printing from PageMaker 6.5 .....	35
Appendix A. About Offset Adjustment .....	37
Appendix B. List of Fonts .....	40
Appendix C. Kimosetter 340/340i Printable Area .....	43
Appendix D. Installing the Printer Driver.....	44

# MEMO

## Chapter 1. Set Up

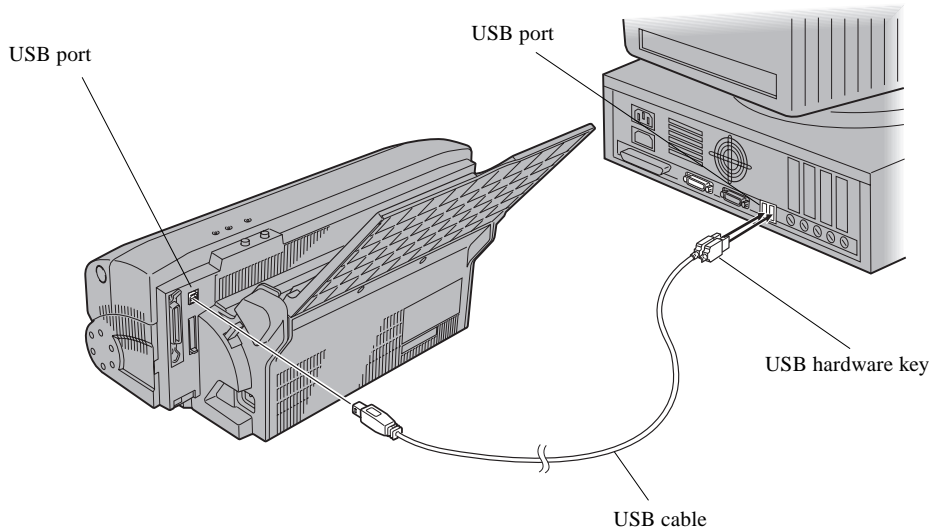
### System Requirements

The following systems are required for using Kimosetter 340 RIP.

	Minimum system	Recommended system
Processor	Pentium II 233MHz	Pentium II 400MHz or faster
Memory space	128MB	256MB or More
Installation space	100MB	200MB
Free Disk space	1GB	2GB (for data storage)
OS	Windows 98/Me/2000/XP latest version of each	Windows 98/Me/2000/XP latest version of each
Monitor Settings	screen resolution 800 x 600 16-bit color	screen resolution 1024 x 768 16-bit color
Peripheral devices	CD-ROM drive	CD-ROM drive
Interface	USB	USB
Others	Two USB ports	Two USB ports

### To connect the Kimosetter 340/340i to your computer

Connect the Kimosetter 340/340i to your computer as described in Chapter 1 "Connecting Cables for Windows." (USB connection) in the Kimosetter 340/340i User's Guide.



### Attach hardware key

Attach the hardware key supplied with the Kimosetter 340 RIP. The key (also called dongle) can be attached to a USB port on your computer.

## To install program

Install the RIP program from the RIP CD-ROM.

### CAUTION

Installation of the Printer Driver:

This PC RIP requires the Kimosetter 340/340i printer driver of Version 1.3 or later. DO NOT install the printer driver from the Kimosetter 340/340i CD if it is earlier than Version 1.3. In this case, please install the printer driver from the PC RIP CD BEFORE installing the RIP. Refer to Appendix D: Installing the Printer Driver.

If you will use both the Kimosetter 340 and Kimosetter 340i, install the printer driver for each model first, and then install the RIP.

## For Windows 98/Me

1. Attach the hardware key to a USB port on the computer.

### CAUTION

After the USB hardware key is attached to the computer, the **Add New Hardware** dialog box will appear. Cancel this operation. The proper USB Driver will automatically be installed during the RIP installation.

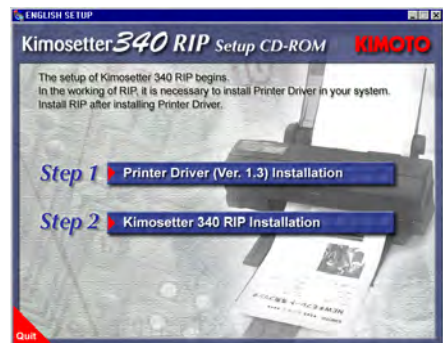
2. Insert the **Kimosetter 340 RIP CD-ROM** in your computer.

3. Double-click the **English Setup** icon.



4. **Kimosetter 340 RIP setup CD-ROM** dialog appears.

Click **Kimosetter 340 RIP Installation**.

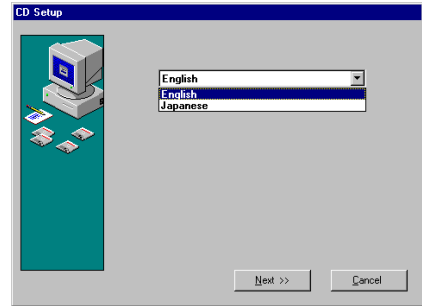


5. Warning message will appear.

Make sure that the printer driver is Version 1.3 or higher and that it is for a USB port setting.

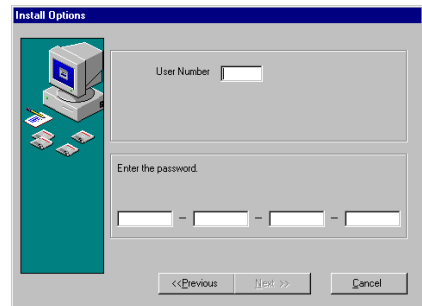


6. Select language.



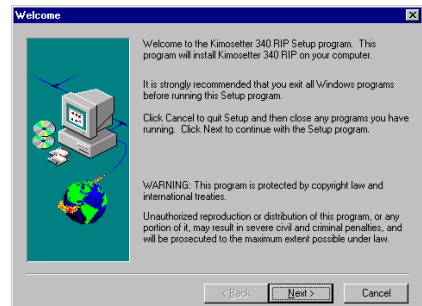
7. Enter User ID and Password.

The User ID (6 digits) and password (20 digits) are found on the hardware key. Do not enter hyphens. Click **Next**.



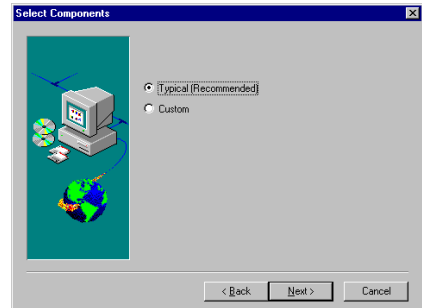
8. Welcome dialog appears.

After reading, click **Next** to proceed with the installation process.

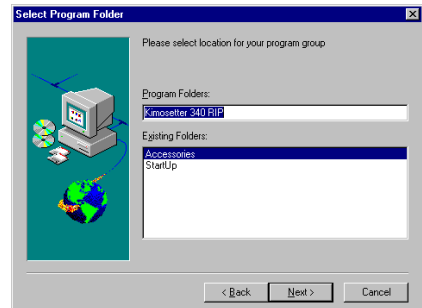


**9.** Select Components to install.

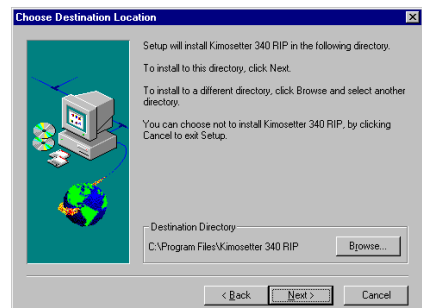
**Select Components** dialog appears. Select the default **Typical (Recommended)** and click **Next**.

**10.** Select Program folder.

**Select Program Folder** dialog appears. Select the program group which the Kimosetter 340 RIP will belong to.

**11.** Select Location to install.

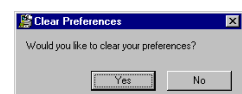
**Choose Destination Location** dialog appears. Choose the destination directory. If you want to select other directory than the default one, click **Browse**, select a directory then click **Next**.

**CAUTION**

Please ensure that the drive selected has 2GB or more free space.

**12.** Clear Preferences.

Clear all of your preferences by clicking **Yes**.





**13.** Finish installation.

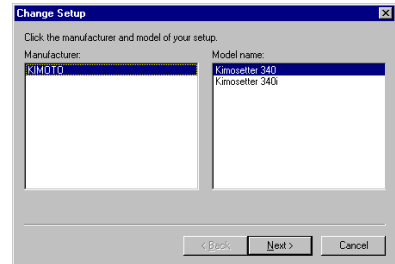
The computer must restart to finish the installation. Please restart the computer now.

**Setup Printer**

Make sure that the printer is connected to the computer and turned ON.

**14.** Device Setup.

After the computer restarts, the Change Setup dialog box appears. Choose either Kimosetter 340 or Kimosetter 340i. Click **Next**.

**15.** Select port.

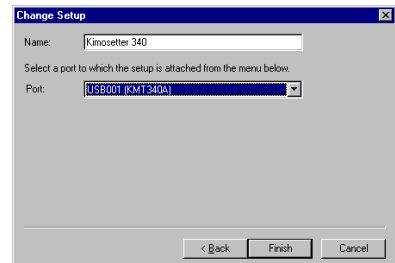
Select the port that connect to the Kimosetter now and click **Finish**.

When using Kimosetter 340

Select **USBxxx(KMT340A)** (xxx is a USB port ID) in the port field.

When using Kimosetter 340i

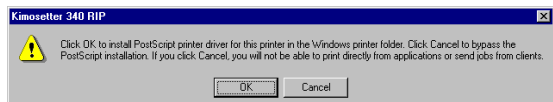
Select **USBxxx(KMT340AI)** (xxx is a USB port ID) in the port field.

**CAUTION**

Use the default printer name in the **Name** field as it is. If the printer is not connected and turned ON, the port selection does not display (USBxxx(KMT340A) or USBxxx(KMT340AI). It is recommended to finish the Change Setup by temporarily selecting any other port name, such as FILE. When finished, open the **Setup Properties** dialog box from the print monitor of the RIP. Click **General** tab and choose USB port again.

**16.** Finish Setup.

Click **OK**.

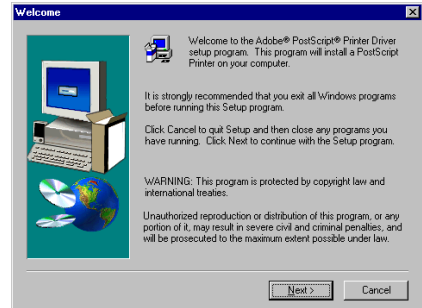


## To install Adobe Printer Driver

Next step is installation of AdobePS printer driver.

### 17. Welcome dialog appears.

Click **Next**.



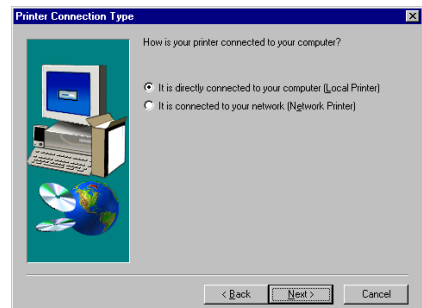
### 18. Read the license agreement.

**End User License Agreement** dialog appears. Read carefully and if you accept click **ACCEPT**.



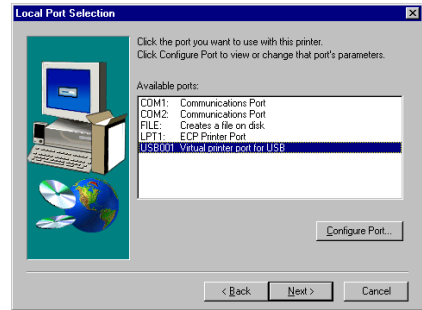
### 19. Select printer connection type.

**Printer Connection Type** dialog appears. Select **Local Printer** and click **Next**.



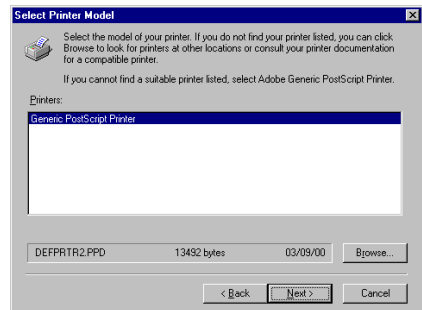
20. Select local Port.

**Local Port Selection** dialog appears. Select any port and click **Next**.



21. Select printer model.

**Select Printer Model** dialog appears. Click **Browse**.

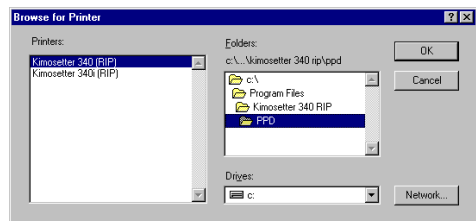


22. Select PPD folder.

**Browse for Printer** dialog appears. Select the printer in the **Printers** field and the folder that contains PPD files in the **Folders** field. The PPD files are located at

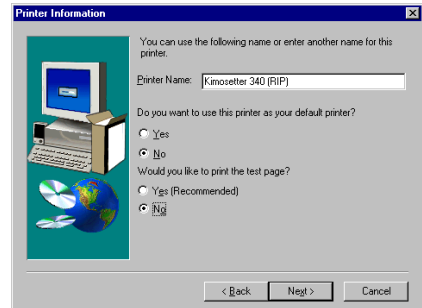
c:\Program Files\Kimiosetter 340 RIP\PPD

click **OK** and the **Select Printer Model** dialog appears. Click **Next**.

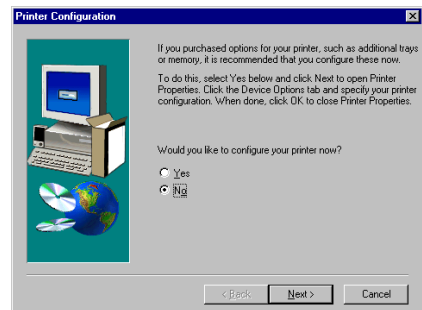


**23.** Select Printer Information.

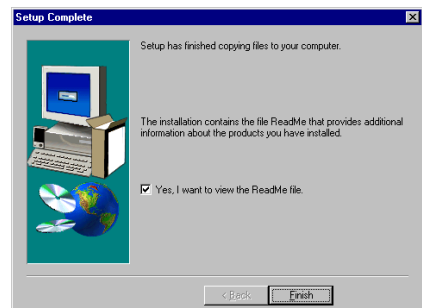
**Printer Information** dialog appears. Click **No** for a test print. Click **Next**.

**24.** Finish installation.

After the installation is completed, the **Printer Configuration** dialog appears. Click **No** and click **Next**. Printer configuration will be done later.

**25.** Quit installer.

**Setup Complete** dialog appears telling you that the Setup is completed. Quit Installer by clicking **Finish**.

**26.** Restart Windows.

A dialog asks you if you want to restart the computer. Select **Yes, I want to restart my computer now** and click **OK**.

## For Windows 2000/XP

**CAUTION**

To install the RIP on a PC with Windows 2000/XP you must log in as an administrator.

1. Attach the hardware key to a USB port on the computer.

**CAUTION**

After the USB hardware key is attached to the computer, the **Found New Hardware Wizard** dialog box will appear. Cancel this operation. The USB Driver will automatically be installed during the RIP installation.

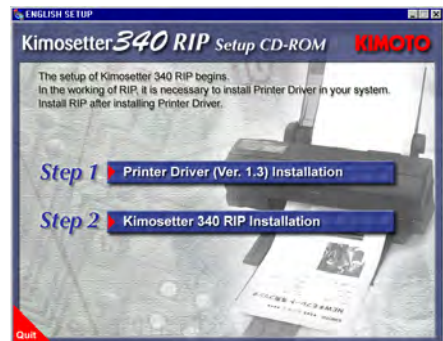
2. Insert the **Kimosetter 340 RIP** CD-ROM in your computer.

3. Double-click the **English Setup** icon.



4. **Kimosetter 340 RIP setup CD-ROM** dialog appears.

Click **Kimosetter 340 RIP Installation**.



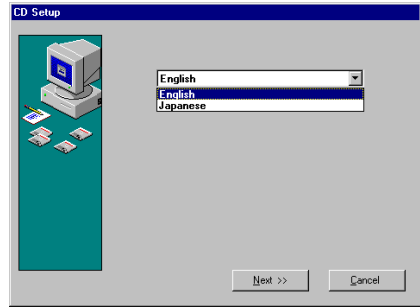
5. Warning message will appear.

Make sure that the printer driver is Version 1.3 or higher and that it is for a USB port setting.

**MEMO**

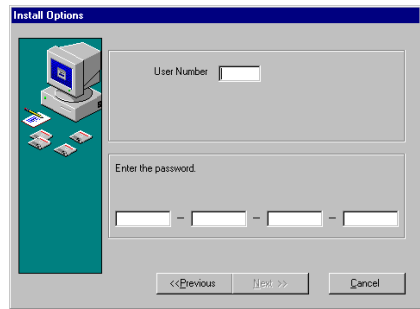
To know the version of the printer driver of your computer, refer to the page 44 "To check the version of the printer driver".

6. Select language.



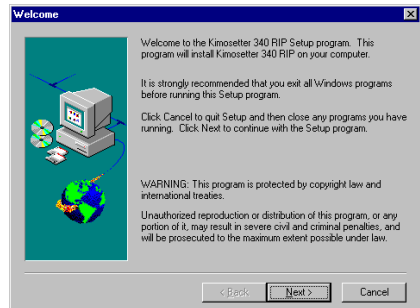
7. Enter User ID and Password.

The User ID (6 digits) and password (20 digits) are found on the hardware key. Do not enter hyphens. Click **Next**.



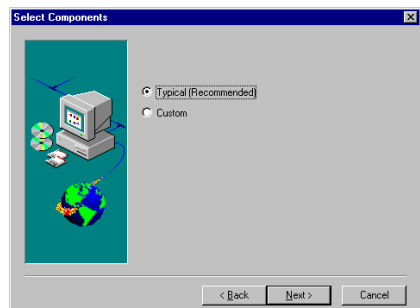
8. Welcome dialog appears.

After reading, click **Next** to proceed with the installation process.



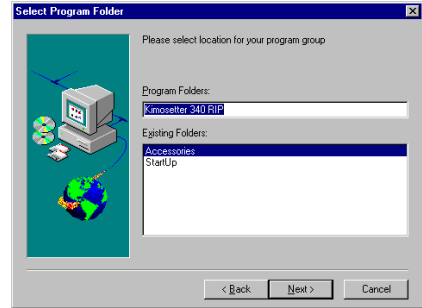
9. Select Components to install.

**Select Component** dialog appears. Select the default **Typical (Recommended)** and click **Next**.



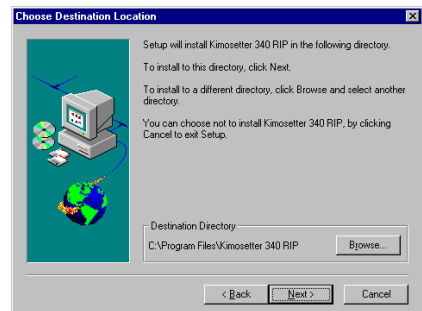
10. Select Program folder.

**Select Program Folder** dialog appears. Select the program group which the Kimosetter 340 RIP will belong to.



11. Select Location to install.

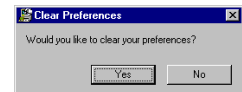
**Choose Destination Location** dialog appears. Choose the destination directory. If you want to select other directory than the default one, click **Browse**, select a directory then click **Next**.



Please ensure that the drive selected has 2GB or more free space.

12. Clear Preferences.

Clear all of your preferences by clicking **Yes**.



13. Finish installation.

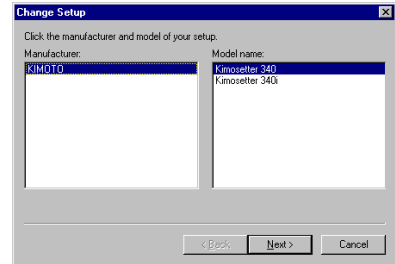
**A dialog** asks you if you want to restart the computer. Select **Yes, I want to restart my computer now** and click **OK**.

## Setup Printer

Make sure that the printer is connected to the computer and turned ON.

### 14. Device Setup.

After the computer restarts, the Change Setup dialog box appears. Choose either Kimosetter 340 or Kimosetter 340i. Click **Next**.



### 15. Select port.

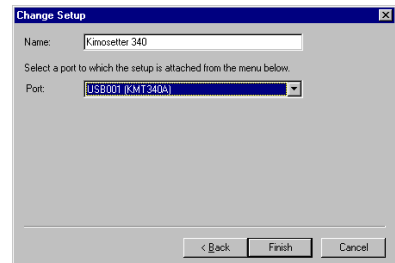
Select the port that connect to the Kimosetter now and click **Finish**.

When using Kimosetter 340

Select **USBxxx(KMT340A)** (xxx is a USB port ID) in the port field.

When using Kimosetter 340i

Select **USBxxx(KMT340AI)** (xxx is a USB port ID) in the port field.

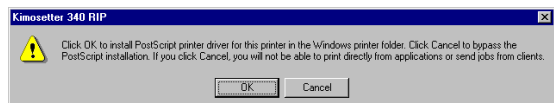


#### CAUTION

Use the default printer name in the **Name** field as it is. If the printer is not connect and turned ON, the **Port** options will not appear (**USBxxx(KMT340A)** and **USBxxx(KMT340AI)**). It is recommended to finish the **Change Setup** by temporarily selecting any other port name such as FILE. When finished, open the **Setup Properties** dialog box from the print monitor of the RIP. Click **General** tab and choose USB port again.

### 16. Finish setup.

Click **OK**.



With Windows 2000/XP, the installer will automatically proceed to install the PostScript printer driver.



**Before using the Kimosetter****For Windows 98/Me**

Change setup so that Adobe PostScript printer driver will work with Kimosetter 340 RIP.

**1.** Open Printer Folder.

Select **Start > Settings > Printers**. The printer folder will open.

**2.** Open Properties.

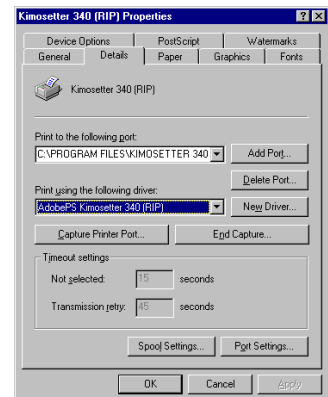
Click the right-button on **Kimosetter 340 (RIP)** icon or **Kimosetter 340i (RIP)** icon and select **Properties** in the pop-up menu.

**3.** Open **Details** tab.

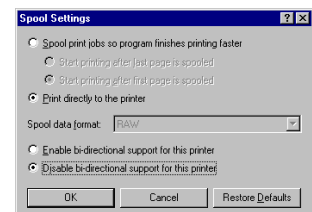
Choose **Details** tab in the **Kimosetter 340 (RIP) Properties** dialog.

**4.** Open **Spool** dialog.

Click **Spool Settings**.

**5.** Setting printer spool.

In the **Spool Settings** dialog check **Print directly to the printer** and **Disable bi-directional support for this printer**, if selectable. Click **OK**.

**6.** Finish setting.

In the **Kimosetter 340(RIP) Properties** dialog, click **OK**.

## For Windows 2000/XP

Change setup so that PostScript printer driver may work with Kimosetter 340 RIP.

---

**1.** Open Printer Folder.

Select **Start > Settings > Printers**. The printer folder will open.

---

**2.** Open Properties.

Click the right-button on **Kimosetter 340 (RIP)** icon or **Kimosetter 340i (RIP)** icon and select **Properties** in the pop-up menu.

---

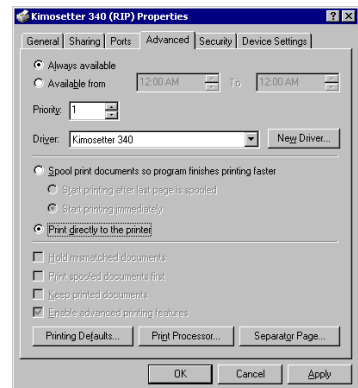
**3.** Open **Advanced** tab.

Choose **Advanced** tab in the **Kimosetter 340 (RIP) Properties dialog**.

---

**4.** Setting printer spool.

Check **Print directly to the printer**. Click **OK**.



---

**5.** Finish setting.

In the **Kimosetter 340 (RIP) Properties** dialog, click **OK**.

---

**To uninstall RIP****For Windows 98/Me**

To uninstall the RIP follow these procedures.

---

**1.** Close the Print Monitor.

If the RIP is active, close the Print Monitor. Click the right-button on the **Print Monitor** icon at the right bottom of the monitor. From pop-up menu, choose **Exit**.

---

**2.** Delete the printer icon.

Select **Start > Settings > Printers** to open Printer folder. Right-button click on the **Kimosetter 340 RIP** icon and select **Delete** from pop-up menu.

---

**3.** Open **Control Panel**.

Select **Start > Settings > Control Panel**.

---

**4.** Double click **Add/Remove Programs**.

---

**5.** Delete Kimosetter 340 RIP.

Select Kimosetter 340 RIP in the list, click **Add/Remove** button.

---

**6.** Delete relevant files.

Select Hot Folder 3 in the list and click **Add/Remove** button.

When finished, click **OK**.

---

**7.** Remove folder.

Remove the folder where the RIP is installed. Its default location is C:\Program Files\Kimosetter 340 RIP.

---

**8.** Empty trash.

## For Windows 2000/XP

To uninstall the RIP follow these procedures.

---

**1.** Close the Print Monitor.

If the RIP is active, close the Print Monitor. Click the right-button on the **Print Monitor** icon at the right bottom of the monitor. From pop-up menu, choose **Exit**.

---

**2.** Delete the printer icon.

Select **Start > Setup > Printer** to open Printer folder. Right-button click on the **Kimosetter 340 RIP** icon and select **Delete** from pop-up menu.

---

**3.** Open **Control Panel**.

Select **Start > Settings > Control Panel**.

---

**4.** Double click **Add/Remove Programs**.

---

**5.** Delete Kimosetter 340 RIP.

Select Kimosetter 340 RIP in the list, click **Change/Remove** button.

---

**6.** Delete relevant files.

Select Hot Folder 3 in the list and click **Change/Remove** button.

When finished, click **Close**.

---

**7.** Remove folder.

Remove the folder where the RIP is installed. Its default location is C:\Program Files\Kimosetter 340 RIP.

---

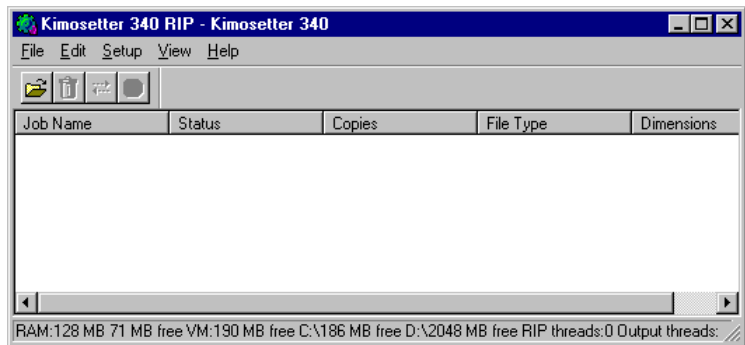
**8.** Empty trash.

## Chapter 2. Functions of the RIP

How to use the functions of the Kimosetter RIP.

### Print Monitor

Double-click the desktop icon of **Kimosetter 340 RIP**, and the Print Monitor will appear. The Print Monitor tells you the status of jobs to be printed and allows you to change the status.



#### MEMO

Kimosetter 340 RIP program will automatically start when the computer starts up. Double clicking the **Kimosetter 340 RIP** icon at the right bottom of the monitor will also bring this Print Monitor.

If for some reason you do not want the RIP to start automatically, remove the icon from the startup folder.  
**Start button > Programs > Startup**

### Function of each button



#### Add Job

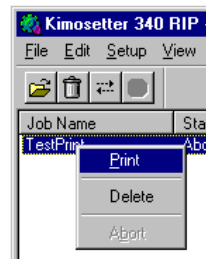
Click this button to add jobs. Select the file to be added and click **Open**. The natively supported file formats are JPEG, TIFF, PDF, PostScript, EPS and BMP. The newly added job will be listed on the Print Monitor with the status as **Holding**. If it is a PostScript file, the printing procedure depends upon the selected option, **Print** or **Hold**, in the **After spooling** option.

To print jobs in the queue, select the job and click **Print** button. To select more than one jobs in the queue, hold the Shift or Control key down and click those jobs. Then Print.

#### MEMO

RIP is an acronym for Raster Image Processor. It creates a dot-by-dot representations from the file to form the final printed output. RIPing requires a rather high performance computer, and the RIPing time depends on the computer and the file size.

Move the cursor over the job and right-click the mouse button. The following menu will appear.



**Print:** Starts printing the job.

**Delete:** Deletes the job.

**Abort:** Stops printing the job.



**Delete**

The delete button deletes selected jobs. Select a job or jobs you want to delete and click **Delete**.



**Print**

The print button starts printing selected jobs. Select a job or jobs you want to print and click **Print**.



**Abort**

The Abort button stops printing. Select a job or jobs you want to stop printing and click **Abort**.

**Information display**

Print jobs are queued in the order that they are sent to the RIP. Job information is displayed on the Print Monitor.

**Job Name:** Displays the name of the file.

**Status:** Displays the current progress of the job as either **Holding, RIPing, Printing**, etc.

**Copies:** Displays the number of copies selected in the AdobePS Printer Driver.

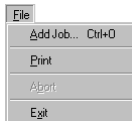
**File Type:** Displays the file type of the selected job.

**Dimensions:** Displays the image size as defined in the job file. The plate you are going to use should be larger than this image size. For more information about media size and centering the image on the plate, see Appendix C: Kimosetter 340/340i Printable Area.

**Menu**

This section explains the **Menu** options.

**File**



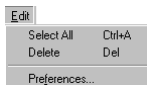
**Add Job:** Adds a job to the queue.

**Print:** Prints a job from the queue.

**Abort:** Stops printing the current job.

**Exit:** Exits the RIP program and closes the screen.

**Edit**

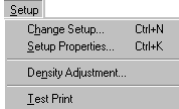


**Select All:** **Select all** jobs added to the Print Monitor.

**Delete:** Deletes jobs from the queue.

**Preferences:** See the section on **Preferences**.

## Setup



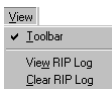
**Change Setup:** Changes the printer model. If you change the model, all the settings you have made in the **Setup Properties** will be cleared and reset as default.

**Setup Properties:** Please refer to the next page.

**Density Adjustment:** See the section on Density Curve Adjustment.

**Test Print:** To run a test print, insert a plate 210x297mm or greater into the feeder.

## View

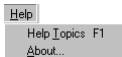


**Toolbar:** Show or hide the toolbar.

**View RIP Log:** Displays the current status of the RIP including error information.

**Clear RIP Log:** Deletes all the information in the log.

## Help

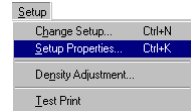


**Help Topics:** Displays the User's Guide of **Kimosetter 340 RIP** in PDF format. To open the PDF files, you need Adobe Acrobat Reader. If you do not have Adobe Acrobat Reader installed in your PC, there is a copy on the RIP CD. It is located at Kimosetter 340 RIP\Util\Acrobat Reader \English\ar500enu.exe.

**About:** Shows the version information of the RIP.

## Setup Properties

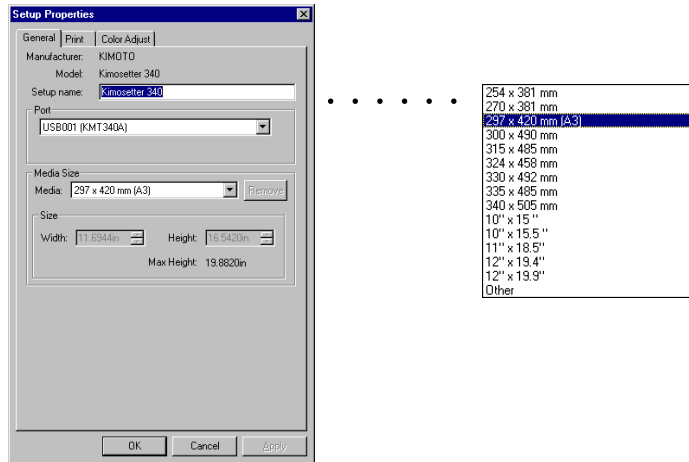
Choose **Setup Properties** from **Setup** menu to change the default preferences for the Kimosetter.



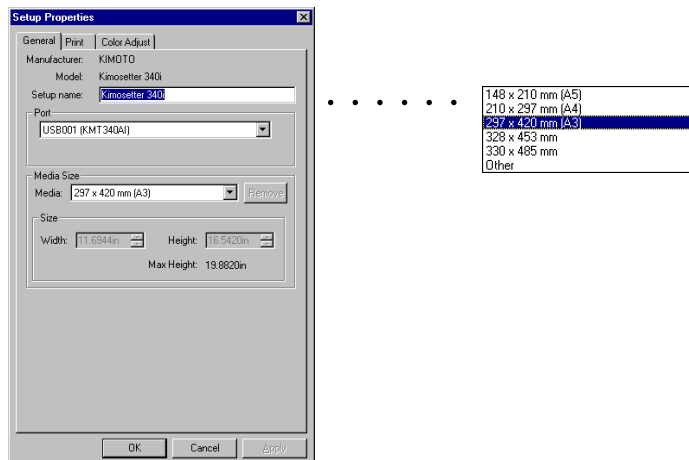
### General tab

Check if the correct printer is selected. Choose the Media Size or Select **Other** to create a custom size. The minimum size is 98mm (width) x 98mm (height) and the maximum size is 330.2mm (width) x 505.0mm (height) After setting, click **Apply**.

If your printer is Kimosetter 340



If your printer is Kimosetter 340i



The actual media size you are imaging should be the same or greater than the Media Size you choose here.



**Print tab**

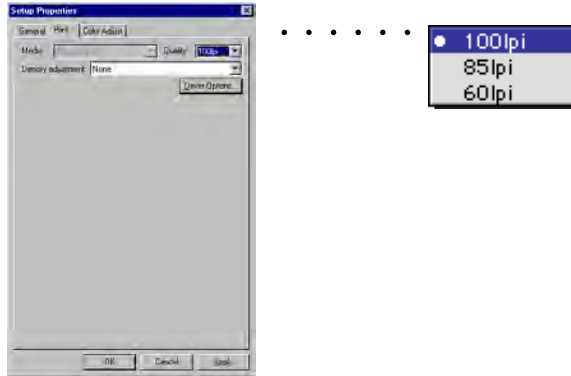
The **Print** tab allows you to choose a screen ruling (Quality) and to change the tone curve of graphics (Density Adjustment).

**Density Adjustment:** Select a profile (density curve) you have created previously.

For details see the section on Density Curve Adjustment.

**Driver Options:** See the section on Driver Options.

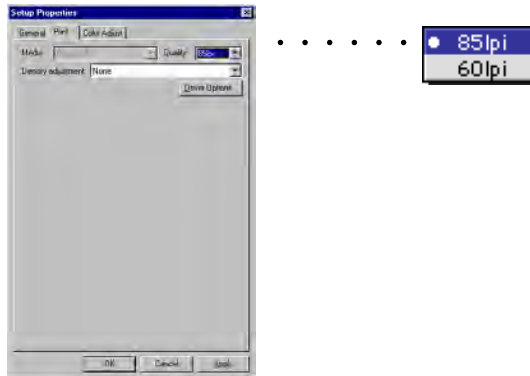
If your printer is Kimosetter 340



**Media:** Kimoplate e2

**Quality:** Choose the screen ruling from 100, 85 and 60pi.

If your printer is Kimosetter 340i



**Media:** Kimolec TH

**Quality:** Choose the screen ruling from 85 and 60pi.

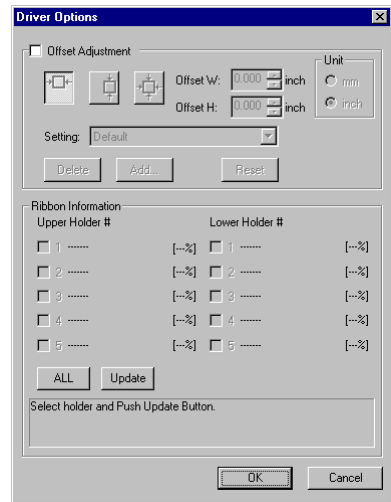
### Color Adjust tab

You can adjust **Density** and **Contrast**. The slider of **All** works the same as **Density** does. Use either of the two sliders.



## Driver Options

**Driver Options** dialog box allows **Offset Adjustment** to be made. It also displays the status of the ink cartridges.



### Offset Adjustment

Checking the **Offset Adjustment** check box allows you to shift the image position from the default one.



#### Centering Horizontally

Pressing this button will center the image horizontally starting at the top of the plate.



#### Centering Vertically

Pressing this button will center the image vertically starting at the right side of the plate.



#### Centering

Pressing this button will put the image in the center of the plate.

Giving a value to Offset W and Offset H, you can shift the position of the image from the above home position.

**Offset W:** Enter the value to be shifted to right or left. The value should be within the range from -150mm to 150mm.

**Offset H:** Enter the value to be shifted up or down. The value should be within the range from -250mm to 250mm.



For more detailed explanation on how the Offset adjustment works, see the Appendix A.

**Unit:** The Unit of the input value of the **Offset W/Offset H** is changed to mm or inch.

**Setting:** You can save the settings of **Offset Adjustment** for frequent.

**Delete:** This button deletes a selected setting from the list.

**Add:** Press **Add** button to save the current setting in the list. Type a name with 64 characters or less. You can save up to 10 settings.

**Reset:** Bring back the default setting.

### Ribbon Information

**Update:** Click this button to update the status of selected (checked) ink cartridges.

**All:** Click this button to select (check) all ink cartridges.

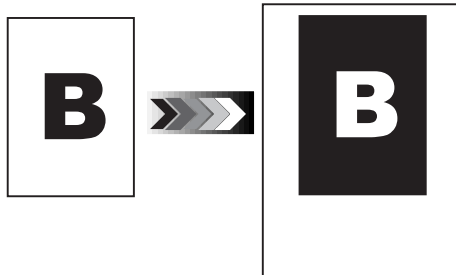
### Negative Print

When the **Negative Print** check box is checked, the media size defined on the RIP (**Setup Properties** > **General**) will be inverted.



If you check this check box, do not use the invert feature available from Print menu of application that is described in the Chapter 3.

The following examples will illustrate the difference of the two invert functions; one from the Print menu of the application and the other from the RIP.



**Invert feature of Print menu of the application (AdobePS):**  
The image size defined by the application will be inverted.



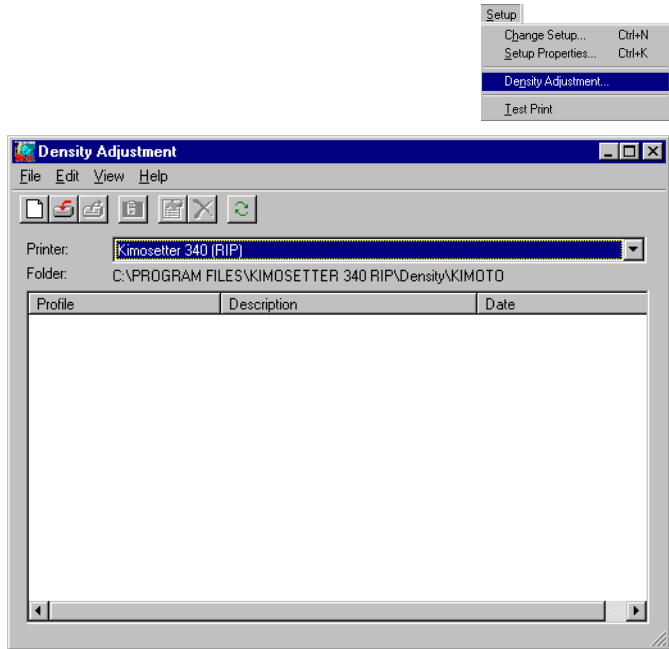
Image size defined by application.

Media size defined in General tab of the RIP

**Invert feature by Driver Options of the RIP:**  
The media size defined in General tab will be inverted.

## Density Curve Adjustment

The Density Curve Adjustment feature enables you to balance the print results of 2 or more Kimosetters. Choose **Density Adjustment** from **Setup** menu.



### Function of each button



#### New Profile

Use this button to create new profiles (density curves). The created profile will be added into **Density Adjustment** in the **Print** tab from the **Setup Properties**.



#### Import Profile

You can import profiles (density curves) using this button. Click the **Import Profile** button and then select the file to import it.



#### Export Profile

Use this button to export profiles (density curves). Select the profile and click the **Export Profile** button to export it.



#### Profile Properties

Use this button to edit profiles (density curves). Select the profile and click the **Profile Properties** button to display the **Density Curve Adjustment** dialog and to edit the density curve.



#### Delete Profile

Use this button to delete density files selected. Select the profile and click the **Delete Profile** button to delete.



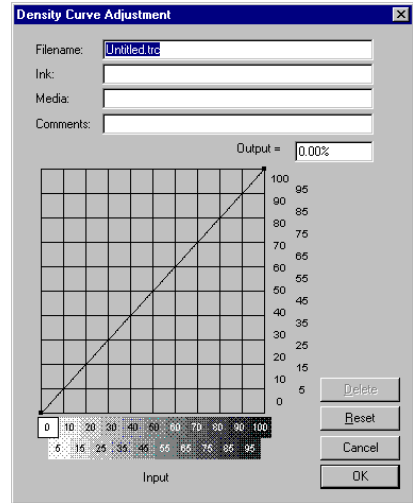
#### Refresh List

It is possible to update the list of **Density Curve Adjustment** files.

## Create and Edit Density curve

Click the **New Profile** button to create a new profile.

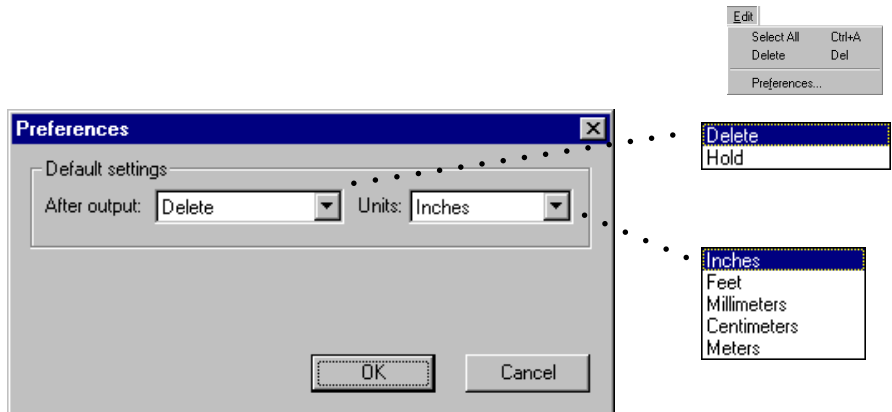
To edit previously created profiles, select the profile in the list and click **Profile Properties** button.



The vertical axis represents the output density for the input value on the horizontal axis. The default is a straight line which, for example, converts the input density 50% to the output density 50%. To edit the curve, drag any point on the line to the density point you want to get. To save the density curve as a new profile, enter the file name and click **OK**.

## Preferences

To change the following default setting, choose **Preferences** from **Edit** menu.



**After output:** Specify whether you **Delete** or **Hold** jobs after printing.

**Units:** You can select a measurement unit which will be applied to the media size you select on '**Setup > Setup Properties > General > Media: Other**' and to the **Dimension** in the Print Monitor. Available units are; millimeters, centimeters, meters, inches and feet.

## Chapter 3. Printing

There are two ways to print. One is to print without opening the application on which the file was created. The other is to send the print command from the application.

In this chapter the description is about Kimosetter 340. For Kimosetter 340i, just read 340 as 340i and AmKMT340A.PPD as AmKMT340Ai.PPD.

**CAUTION**

While the RIP program is open, do not select the Kimosetter Printer Driver; it may cause a malfunction.

### Printing Files without opening the associated application software.

The following file formats can be printed without opening the applications on which each file was created; JPEG, TIFF, PDF, PostScript, EPS and BMP.

**CAUTION**

- The supported format of PDF and TIFF is up to Ver 1.2 and Ver 5.0 respectively. If you cannot print properly, open the file on its application and send print command from that application.
- A JPEG saved as CMYK Color Mode can be printed larger than a JPEG file saved in the application. The print sizes are as follows:  
Horizontal: Horizontal pixels / 72 [inches]  
Vertical: Vertical pixels / 72 [inches]
- Since the files in JPEG, TIFF, EPS and BMP format do not contain page sizing information, they will be imaged at the center top on the plate as default.
- When printing JPEG, TIFF, EPS and BMP files, load the media that is larger than the Size shown on the Print Monitor.

#### 1. Start up the RIP.

Double-click the **Kimosetter 340 RIP** icon.

#### 2. Verify the Setup Preferences of RIP.

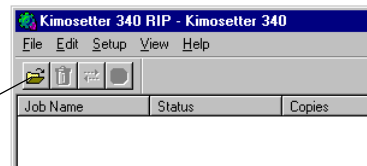
Open the **Setup Properties** dialog box from Setup menu and verify the followings.

**General : Media size**

**Print : Quality** (Screen ruling)

#### 3. Click **Add Job** on the Print Monitor.

Click **Add Job** from the Print Monitor.

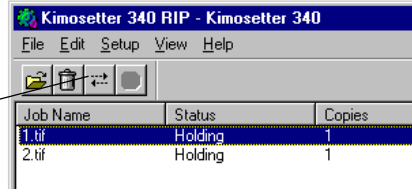


#### 4. Select the file to be printed.

Select files to be printed and click **Open**.

5. Click **Print**.

Select the job and click **Print**.



All newly added jobs will be queued with **Holding** status with the exception of PostScript files. To start RIPing and printing select the jobs and click **Print**. The PostScript files will be processed according to your selection, **Print** or **Hold** in **After spooling** option on AdobePS driver. (**File > Print > Printer Features > After spooling**)

**MEMO** You can drag and drop the files into the Print Monitor.

*Printing from the application software.*

1. Create a file on your application program.

2. Start up the RIP.

Double-click **Kimosetter 340 RIP** icon.

3. Check the settings of Setup Properties.

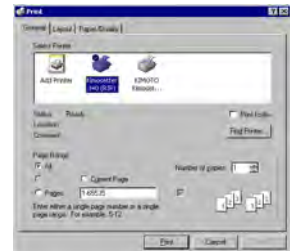
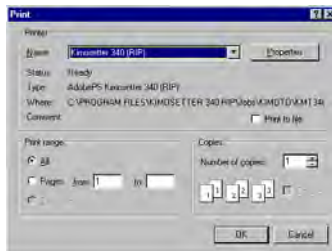
Open the **Setup Properties** dialog box from **Setup** menu to check the following settings.

**Media size** in General tab

**Quality** (Screen ruling) in Print tab

4. Open **Print** dialog.

Select **File > Print**. In the **Print** dialog choose Kimosetter 340 (RIP) in the **Name** field and the **Type** is shown as AdobePS Kimosetter 340 (RIP). Then click **Properties**. When using Windows 2000/XP open **Layout** and click **Advanced**.



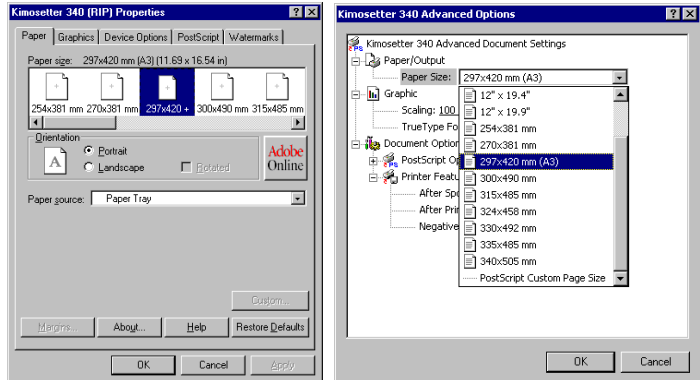
[Windows 98/Me]

[Windows 2000/XP]



## 5. Choose from options.

In the **Kimosetter 340 Properties** Choose the media size and orientation.



[Windows 98/Me]

[Windows 2000/XP]

**CAUTION**

If you want to invert the image (to negative), set up according to the following setting.

**For Windows 98/Me**

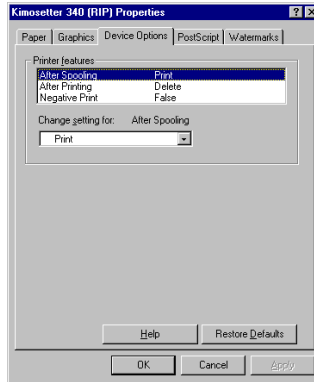
Select **Graphics > Special** on the AdobePS printer driver. Check **Print as a negative image** check box, and print. When **Print as a negative image** of AdobePS printer driver doesn't have any effect, select **Device Options > Printer features** and turn the **Negative Print** from False to True.

**For Windows 2000/XP**

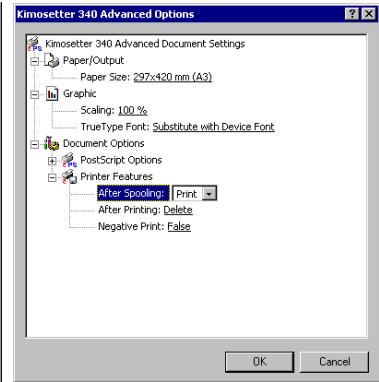
Select **Advanced Options > PostScript Options** on the PostScript printer driver. Turn the **Negative Output** from No to Yes. When **Negative Output** of PostScript printer driver doesn't have any effect, turn the **Negative Print** from False to True.

The invert option you select here will create a negative image for the "Image Size". When you are using a media that is greater than the "Paper Size", the area outside of this "Paper Size" will not become negative. If you want to invert the whole media size, select **Negative Print** in the **Driver Options** dialog of the RIP. (See page 27)

## 6. Select **Device Options** tab.



[Windows 98/Me]



[Windows 2000/XP]

**After Spooling:** The jobs added to the Print Monitor will be processed according to the following setting.

If you select **Hold**, the jobs will not proceed to be RIPed.

If you select **Print**, the jobs will be RIPed and then printed automatically.

**After printing :** You can specify to **Hold** or **Delete** the jobs after printing.

**Negative Print:** Choose **True** if you want to invert the image when **Print as a negative image** is not valid on the print image.

## 7. Start printing.

Click **OK** in the **Print** dialog box to start printing.

## Printing from PageMaker 6.5

The following file formats can be printed without opening the applications on which each file was created; JPEG, TIFF, PDF, PostScript, EPS and BMP.

**CAUTION** Before printing by PageMaker 6.5, copy the PPD file to PM65\RSRC\USEENGLISH\PPD4. The PPD file is supplied in the CD (Kimosetter 340 RIP\Printer Descriptions\English).

1. Create data with the PageMaker 6.5.

2. Start up the RIP.

Double-click **Kimosetter 340 RIP** icon.

3. Set Kimosetter 340 RIP.

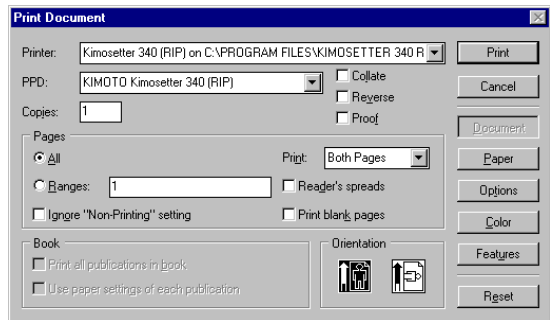
Check the settings for each tab.

**General : Media Size**

**Print : Quality**

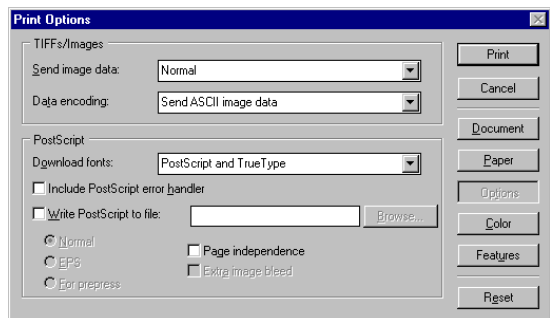
4. Select **Print** from the **File** menu.

**Print Document** dialog appears. Check that **KIMOTO Kimosetter 340 (RIP)** is selected in the PPD field.



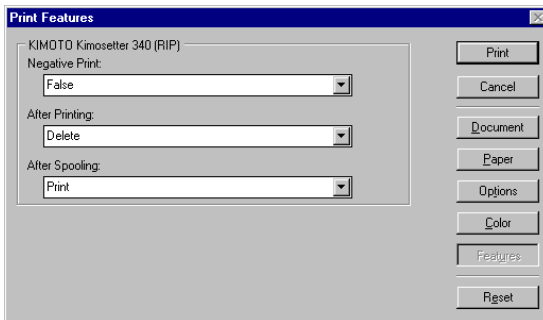
5. Select **Options**.

Check **Options** and **Print Options** dialog will open.



## 6. Setting in **Print Features** dialog.

Clicking **Features** will bring up the **Print Features** dialog. Choose your option in the fields of **Negative Print**, **After Printing** and **After Spooling**.



**CAUTION** Do not choose **Printer default** option in the above fields.

## 7. Other settings.

Set up other features supported by **Paper**, **Options** and **Color** buttons.

**CAUTION** To invert the image, check the **Negative** check box in the **Color** button dialog. If this **Negative** check box does not have any effect, try and turn the **Negative Print** field in the **Print Feature** dialog from **False** to **True**, instead.

The invert option you select here will create a negative image for the "Image Size" . When you are using a media that is greater than the "Paper Size", the area outside of this "Paper Size" will not become negative. If you want to invert the whole media size, select **Negative Print** in the **Driver Options** dialog of the RIP. (See page 27)

## 8. Start printing.

Click **Print** in the Print dialog box to start printing.

## Appendix A. About Offset Adjustment

This version enables you to shift the position of the image on the media using the Offset Adjustment feature.

The **Print Image** here refers to the size of image that you specify as "media size" on the application (or AdobePS Driver), or such graphic image files as TIFF, JPEG etc.

The **Output media** here refers to the physical size of the media you set to the Kimosetter.

Please make sure that the media size you select from RIP (General > Media size) is the same as the output media.

The default setting will put the image on the media in the following way.

### 1. Print image = Output media

If the print image is the same as the output media, the print image will be printed on the printable area of the media. However, the actual print size is within the printable area of the media. (Non printable margin of the media is 3.4mm at the left and right, 12mm at the top and 15mm at the bottom for the media size 330.2mm (W) x 505.0mm (H) or smaller. For the width larger than this, the non printable margin at the right side will be extended. For example, the right margin will be 13.2mm for the media width of 340mm. For details see the section on 'Appendix C. Kimosetter 340/340i Printable Area' on this Manual.)

### 2. Width of print image < Width of printable area

If the width of the print image is smaller than the width of the printable area, it is printed so that the center line of the print image width may cross the center point of the media.

### 3. Height of print image < Height of printable area

If the height of the print image is smaller than the height of the printable area, the top edge of the print image will come to the top edge of the printable area (12mm from the top of the media).

### 4. Width and Height of print image < Width and Height of printable area

If the width and height of the print image is smaller than the width and height of the printable area, the image will be centered horizontally starting at the top edge of printable area (12mm from the top of the media).

### 5. Width of print image > Width of printable area

If the width of the print image is wider than the width of the printable area, it is printed so that the center line of the print image width may cross the center point of the media.

### 6. Height of print image > Height of printable area

If the height of the print image is longer than the height of the printable area, it is printed so that the center line of the print image height may cross the center point of the media.

### 7. Width and Height of print image > Width and Height of printable area

If the width and height of the print image is bigger than the width and height of the printable area, it is printed so that the center of the print image may come to the center of the media.

In the above cases of 5, 6 and 7, however, the actual print size is within the printable area of the media.

**The non-printable top margin of 12mm mentioned above should read 13.4mm in case of Kimosetter 340i.**

#### CAUTION

The <Media Size> you set up in the RIP menu **Setup Properties > General** should be the same or larger than the media size you choose on your application (AdobePS printer driver). Otherwise, a RIP error will occur.

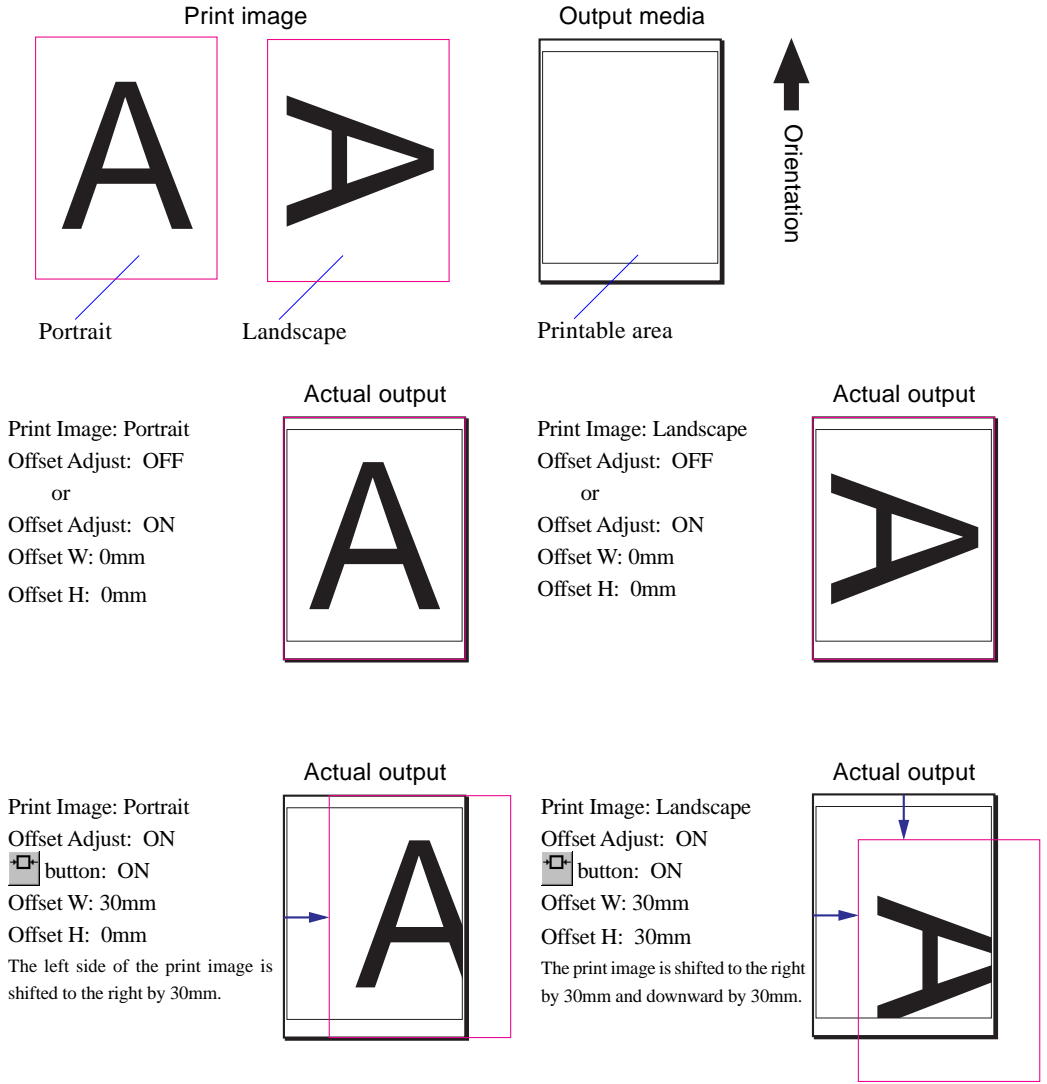
With the offset adjustment feature on, you can adjust the position of image on the media. Here are some examples with illustrations.

Please note that the actual print size is within the printable area of the media. (Non printable margin of the media is 3.4mm at the left and right, 12mm at the top and 15mm at the bottom.)

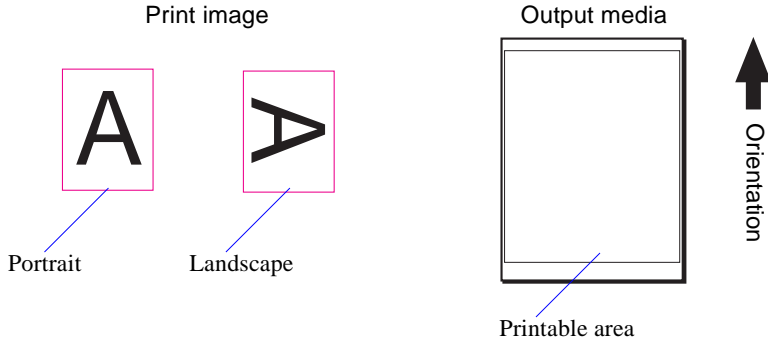


The value you enter in the field of **Offset W** and **Offset H** will shift the image from the position of each button.

**(1) Print image = Output media**

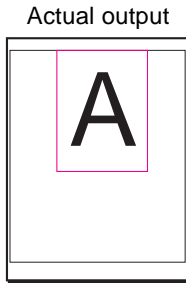


(2) Print image < Output media



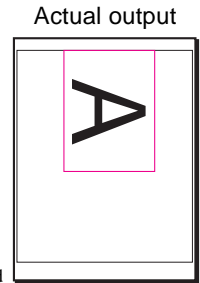
Print Image: Portrait  
 Offset Adjust: OFF  
 or  
 Offset Adjust: ON  
 button: ON  
 Offset W: 0mm  
 Offset H: 0mm

The image will be centered horizontally starting from the top of the printable area leaving 12mm non-printable margin.



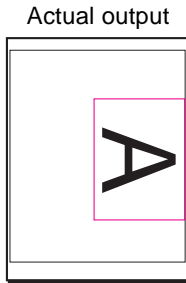
Print Image: Landscape  
 Offset Adjust: OFF  
 or  
 Offset Adjust: ON  
 button: ON  
 Offset W: 0mm  
 Offset H: 0mm

The image will be centered horizontally starting from the top of the printable area leaving 12mm non-printable margin.



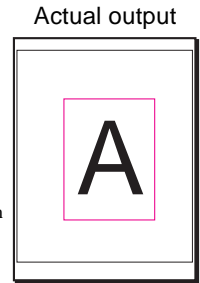
Print Image: Landscape  
 Offset Adjust: ON  
 button: ON  
 Offset W: 0mm  
 Offset H: 0mm

The image will be centered vertically at the right side of the printable area leaving 3.4mm non-printable margin.



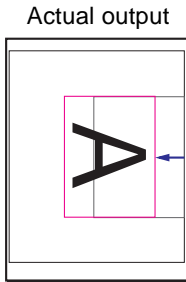
Print Image: Portrait  
 Offset Adjust: ON  
 button: ON  
 Offset W: 0mm  
 Offset H: 0mm

The print image will be centered in the media.



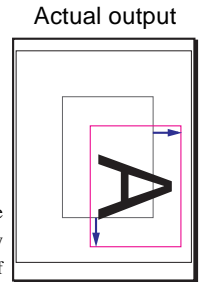
Print Image: Landscape  
 Offset Adjust: ON  
 button: ON  
 Offset W: -30mm  
 Offset H: 0mm

The image will be shifted to the left by 30mm from the position of the above example.



Print Image: Landscape  
 Offset Adjust: ON  
 button: ON  
 Offset W: 30mm  
 Offset H: 30mm

The image will be shifted to the right by 30mm and downward by 30mm from the center position of the media.



The non-printable margin at the right side is 8.4mm and 13.4mm for the media size of 335 x 485mm and 340 x 505mm respectively in case of Kimosetter 340.

## Appendix B. List of Fonts

This is a list of fonts that come with Kimosetter 340 RIP in their output style.

Albertus MT Light	Eurostile Medium
Albertus MT	<b>Eurostile Bold</b>
<i>Albertus MT Italic</i>	Eurostile Extended Two
Antique Olive	<b>Eurostile Bold Ext Two</b>
<i>Antique Olive Italic</i>	Geneva
<b>Antique Olive Bold</b>	Gill Sans Light
<b>Antique Olive Compact</b>	<i>Gill Sans Light Italic</i>
<i>Apple Chancery</i>	Gill Sans
Arial	<i>Gill Sans Italic</i>
<i>Arial Italic</i>	<b>Gill Sans Bold</b>
<b>Arial Bold</b>	<b><i>Gill Sans Bold Italic</i></b>
<b><i>Arial Bold Italic</i></b>	<b>Gill Sans Extra Bold</b>
Bodoni	Gill Sans Condensed
<i>Bodoni Italic</i>	<b>Gill Sans Bold Condensed</b>
<b>Bodoni Bold</b>	Goudy
<b><i>Bodoni Bold Italic</i></b>	<i>Goudy Italic</i>
<b>Bodoni Poster</b>	Goudy Bold
Bodoni Poster Compressed	<i>Goudy Bold Italic</i>
Carta 	<b>Goudy Extra Bold</b>
<b>Chicago</b>	Helvetica
Clarendon Light	<i>Helvetica Oblique</i>
Clarendon Roman	<b>Helvetica Bold</b>
<b>Clarendon Bold</b>	<b><i>Helvetica Bold Oblique</i></b>
<b>Cooper Black</b>	Helvetica Condensed
<b><i>Cooper Black Italic</i></b>	<i>Helvetica Condensed Oblique</i>
COPPERPLATE GOTHIC	<b>Helvetica Condensed Bold</b>
THIRTY TWO BC	<b><i>Helvetica Condensed Bold Oblique</i></b>
<b>COPPERPLATE GOTHIC</b>	Helvetica Narrow
THIRTY THREE BC	<i>Helvetica Narrow Oblique</i>
<i>Coronet</i>	<b>Helvetica Narrow Bold</b>
Courier	<b><i>Helvetica Narrow Bold Oblique</i></b>
<i>Courier Oblique</i>	Hoefler Text
<b>Courier Bold</b>	<i>Hoefler Text Italic</i>
<b><i>Courier Bold Oblique</i></b>	<b>Hoefler Text Black</b>
	<b><i>Hoefler Text Black Italic</i></b>
	Hoefler Text Ornaments 

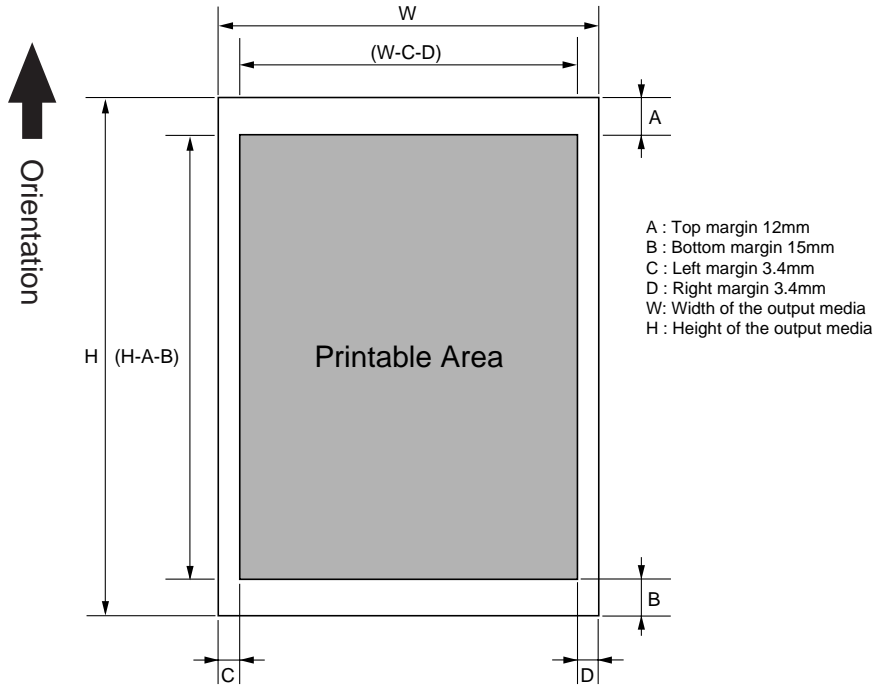




# MEMO

# Appendix C. Kimosetter 340/340i Printable Area

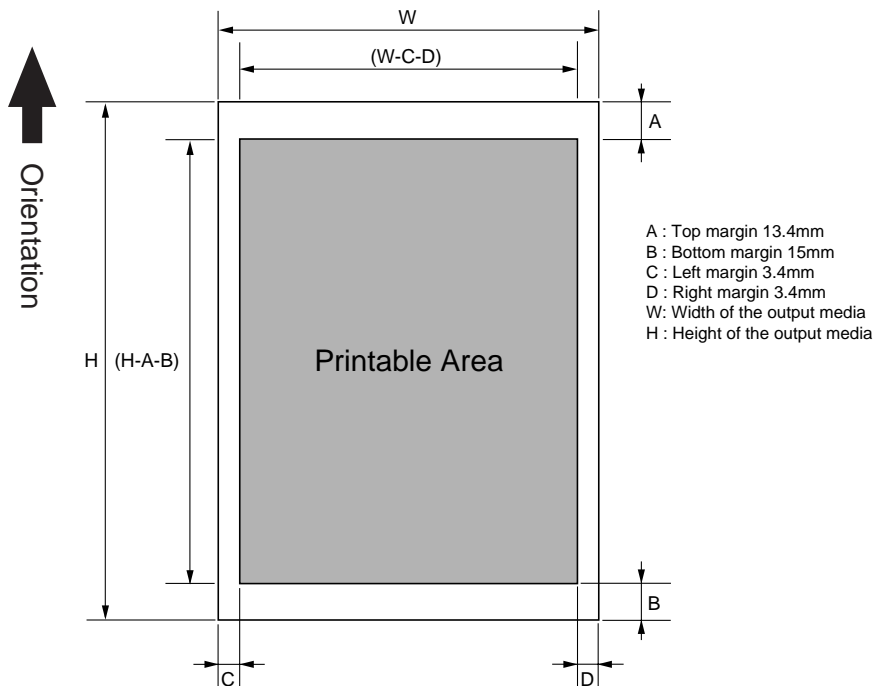
## Kimosetter 340



**CAUTION**

The **Right margin (D)** is 8.4mm and 13.4mm for the media size of 335 x 485mm and 340 x 505mm respectively in case of Kimosetter 340.

## Kimosetter 340i



C

Appendix C. Kimosetter 340/340i Printable Area

## Appendix D. Installing the Printer Driver

Prior to installing the RIP, the printer driver for the Kimosetter 340/340i (Windows generic GDI printer driver) of the version 1.3 or later must be installed in the PC. If the printer driver of earlier version has been installed in your computer, update the printer driver using the version 1.3 included in the CD of Kimosetter 340 RIP.

### MEMO

To check the version of the printer driver.

You can check the version of the printer driver that has been installed in your computer. From the printer folder open the Properties dialog of **KIMOTO Kimosetter 340** or **KIMOTO Kimosetter 340i**.

For Windows 98/Me

Click **Print Settings > About**.

For Windows 2000/XP

Click **General > Printing Preferences > About**.

### CAUTION

Do not attach a hardware key while installing the printer driver. The USB hardware key should be attached when you install the Kimosetter 340 RIP.

### The installation process of the printer driver with Windows 98/Me/2000

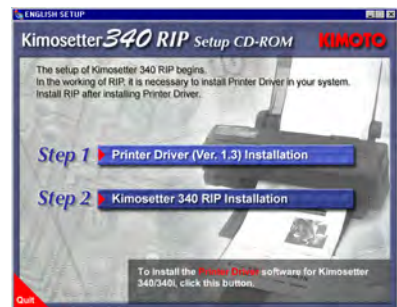
1. Turn off your printer.
2. Insert the **Kimosetter 340 RIP** CD-ROM in your computer.
3. The root folder of the CD appears.
4. Double-click the **English Setup** icon.



5. **Kimosetter 340 RIP setup** dialog appears.



6. Select printer driver installation.  
Click **Printer Driver (Ver.1.3) Installation**.



7. Select a model name.  
**Printer Driver Installation** dialog appears. Click the button of a printer model name to use.

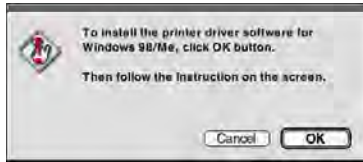


8. Select Windows to install.  
Click the button of the printer driver for Windows of the use.



**9.** Confirm message.

The message of the reconfirmation appears. Click **OK**.



[Windows 98/Me]



[Windows 2000/XP]

**10.** Follow the onscreen instructions.



If the installer finds an earlier version of Kimosetter 340/340i printer driver in your PC, it will ask you to delete the driver. Just follow the instructions to delete it, and restart the PC to proceed.

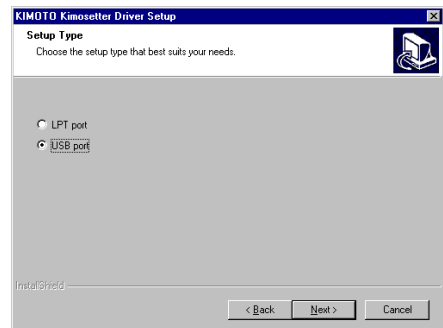
**11.** Read license agreement.

**Software Product License** dialog appears. Click **Yes** if you accept the term of License after reading through the Software Product License.

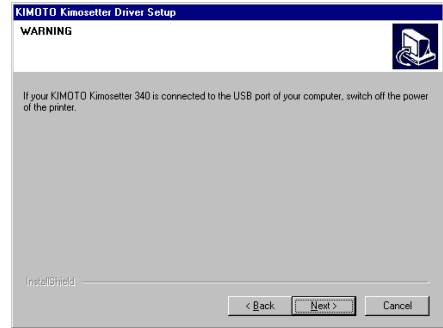


**12.** Choose port.

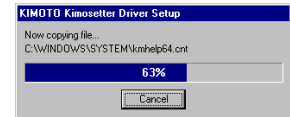
Choose the USB port to which the printer is currently connected and click **Next**.



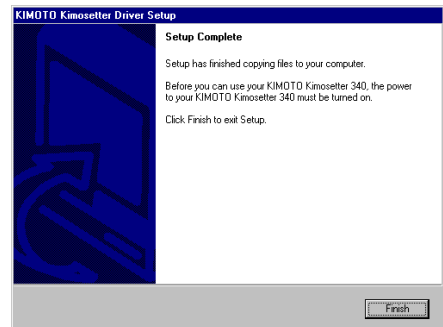
13. Confirm message.  
Confirm the message and Click **Next**.



14. The program files are copied.



15. Finish setup.  
Setup complete dialog appears. Click **Finish**.



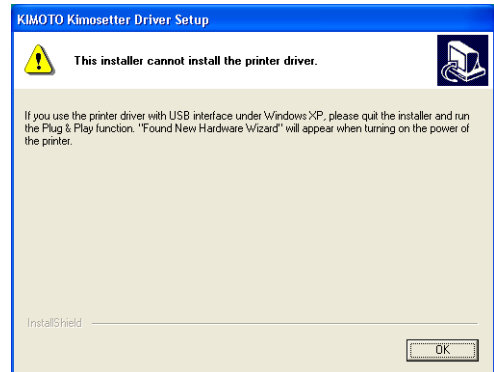
16. Turn on your printer.  
The printer driver is registered automatically in your system and **KIMOTO Kimosetter 340** or **KIMOTO Kimosetter 340i** icon is registered in the printer folder of Windows.

Now go to the **Chapter 1 Set Up** to proceed to the installation of Kimosetter 340 RIP.

## The installation process of the printer driver with Windows XP



If you try to install the printer driver from the Set Up menu like you do with Windows 98/Me/2000, the following message will appear.



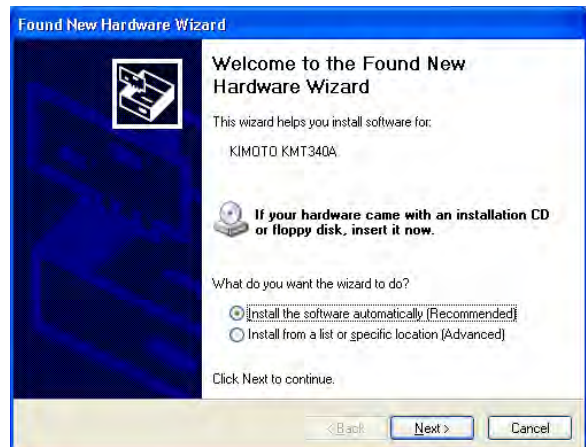
---

1. Turn on the printer.

---

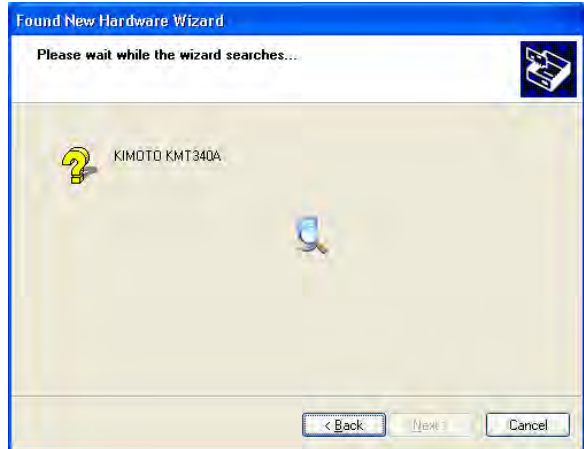
2. Insert Kimosetter 340 RIP CD-ROM in your computer.

**Found New Hardware Wizard** dialog appears. Insert **Kimosetter 340 RIP** CD-ROM in your computer. Confirm that **Install the software automatically (Recommended)** is selected. Click **Next**.



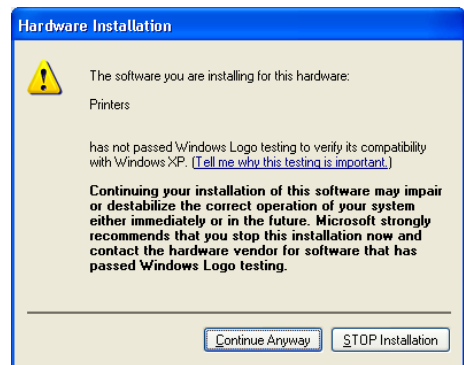


3. The searching program for information file (.inf) starts.

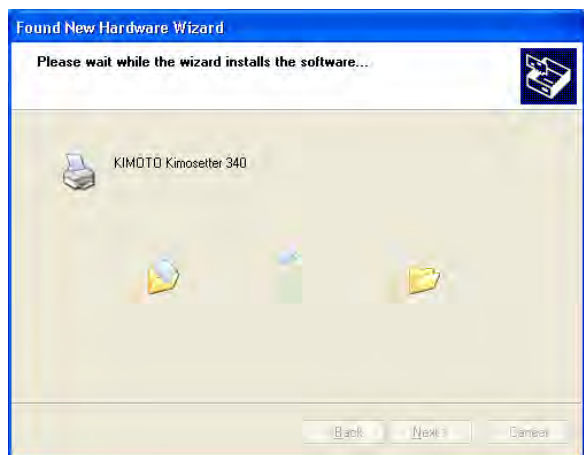


4. Click **Continue Anyway**.

**Hardware Installation** dialog appears. Click **Continue Anyway**.

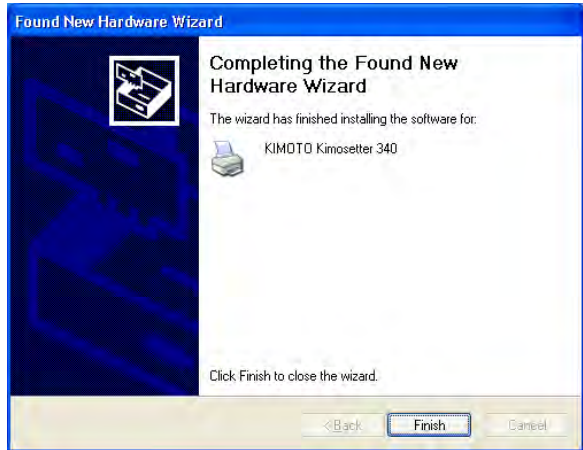


5. Installation is carried out.



**6.** Finish installation.

The following dialog appears when the installation of the printer driver is completed. Click **Finish**.



Now go to the **Chapter 1 Set Up** to proceed to the installation of Kimosetter 340 RIP.

# MEMO