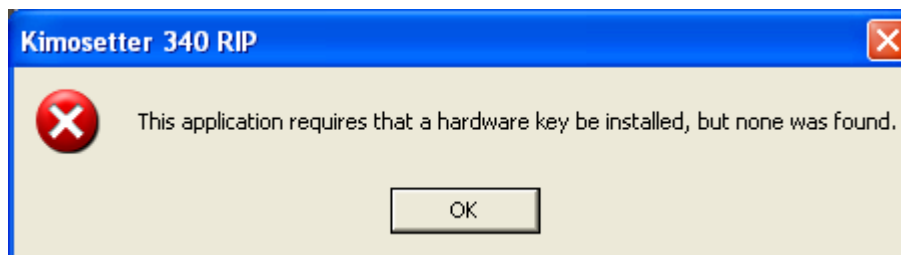


Instructions for installing the Hardware Key Upgrade Driver...

If you receive the following error message it is possible that the most up-to-date driver for your hardware is not installed.



Please click on the following link:

<http://www.aladdin.com/support/hasp/hasp4/enduser.aspx>

On the "HASP4 End Users' Downloads" page click on the file link [HASP4_driver_setup.zip](#) and save it to your desktop.

After downloading this file unzip the folder "HASP4_driver_setup" and click the "hdd32.exe" file to load the new hardware key upgrade.